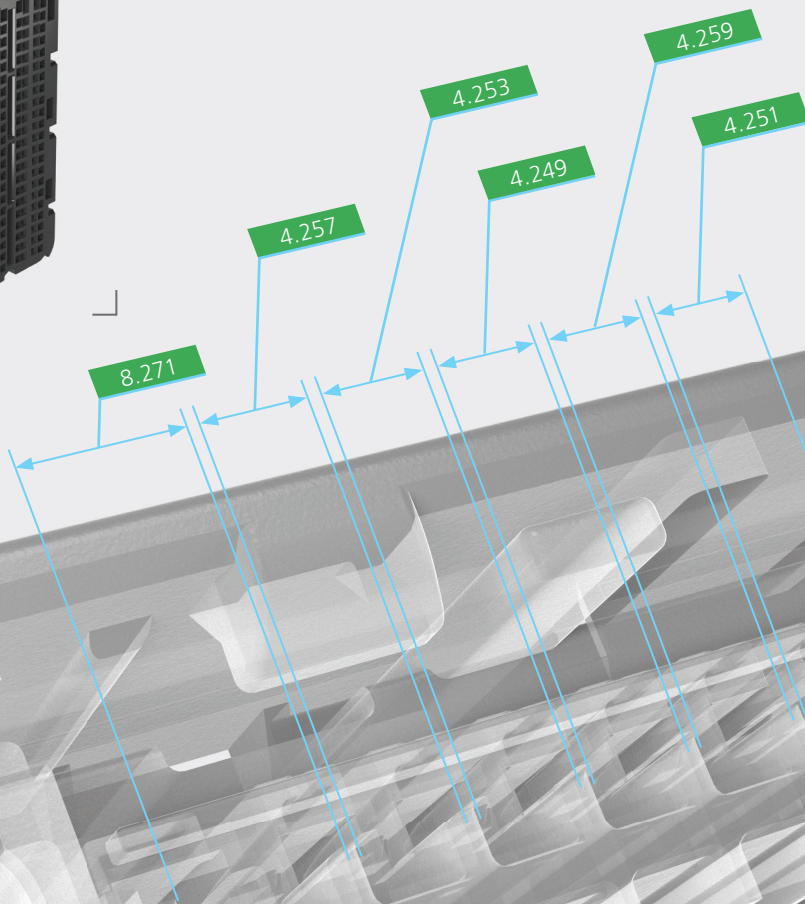
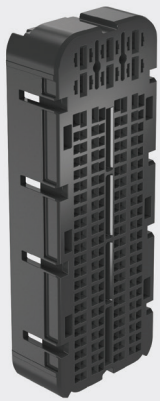


# Traceable 3D X-Ray Measurements

## ZEISS METROTOM Family

**NEW**  
High-resolution  
METROTOM 800



### Efficient measurements with enhanced resolution

ZEISS METROTOM 800, 225 kV, High Resolution (HR)

- Very high resolution for measuring components with narrow tolerances or small defects
- High-performance system for irradiating thicker and multi-material parts
- Faster scanning thanks to the shorter working distance and outstanding performance



# ZEISS METROTOM Family

## The right ZEISS solution for any CT application

The systems in the ZEISS METROTOM family are designed for highly efficient dimensional measurements and the destruction-free inspection of interior component structures and defects. Thanks to the extremely exact positioning system from ZEISS featuring a CAA-corrected precision linear method,

these machines ensure standard-compliant, traceable precision with acceptance as per VDI, VDE 2630. All ZEISS METROTOM systems are equipped with the user-friendly ZEISS METROTOM OS operating and reconstruction software and provide numerous image enhancement options.

### ZEISS METROTOM 800, 130 kV

- ✓ For maximum precision and extremely exact measurements
- ✓ Very high resolution
- ✓ Especially well-suited for plastic components
- ✓ Small footprint

### ZEISS METROTOM 800, 225 kV

- ✓ For especially quick scanning
- ✓ For a broad spectrum of workpieces, including thicker parts and multi-material components
- ✓ Suitable for small and mid-sized components

### ZEISS METROTOM 800, 225 kV, HR

- ✓ Higher resolution as compared to the basic version
- ✓ Larger measuring volume as compared to the basic version

#### Specifications:

Tube voltage: 225 kV, 500 W

Source/detector distance: 800 mm

Measurement volume in image: dia. 170 mm x 115 mm

Detector resolution: 1536 x 1920 Px

Pixel distance: 127  $\mu\text{m}^2$

Resolution (ISO 15708): 4.0 (125 lp/mm)

### ZEISS METROTOM 1500, 225 kV

- ✓ For maximum flexibility, even with very large components
- ✓ For a broad spectrum of workpieces, including thicker parts and multi-material components
- ✓ A very large working distance means maximum geometric magnification

Are you familiar with our ZEISS Xradia Versa and ZEISS VoluMax product families or the products from Bosello High Technology? Learn more at [www.zeiss.de](http://www.zeiss.de)

#### Carl Zeiss

Industrielle Messtechnik GmbH 73446

Oberkochen / Germany

Sales: +49 7364 20-6336

Service: +49 7364 20-6337

Fax: +49 7364 20-3870

Email: [info.metrology.de@zeiss.com](mailto:info.metrology.de@zeiss.com)

Internet: [www.zeiss.com/metrology](http://www.zeiss.com/metrology)

**zeiss.com**

For more information please visit

 **msi-viking.com**