



TORQUE CALIBRATION

A FULL LINE OF PRODUCTS FOR EVERY INDUSTRY

CDI TORQUE MULTITEST CALIBRATION SYSTEMS

The MULTITEST Torque, Force and Tension Calibration System is the most sophisticated system available in the industry. This system will test and calibrate most types of torque wrenches, torque screwdrivers, torque multipliers, cable tensiometers, tension and compression gauges and non-impact power tools such as nutrunners and electric screwdrivers.

The Multitest Calibration System can be ordered several ways. Each system begins with the same three basic components: the Multitest Digital Monitor, the Roller Cabinet and the 2000 ft. lb. Mechanical Loader. We offer three different systems, the "Premier", the "Supreme" and the "Basic". These systems and their components are described in detail on the next few pages.

In addition, you may order any component separately to build your own "custom" system.

Features

- Automatic sensor recognition with "smart" transducers
- Range: 5 in. oz. to 2000 ft. lb. torque (bi-directional)
- Accuracy: $\pm 0.25\%$ of indicated value, cw & ccw, from 10% to 100% of full scale, (except 2000-4-02*)
- Built-in, low profile serial printer
- Date and time stamp for stored values
- Statistical analysis performed on stored data
- Stores up to 3000 torque values
- Programmable manual or automatic options for clear, store and print functions
- 110 or 220 Volts selectable. Foreign plugs are included
- Recall and review of stored torque values
- Track, peak, first peak, power tool modes
- RS232C port, analog output
- Eight torque measurement units:
in. oz., in. lb., ft. lb., Nm, dNm, cNm, mkg and cmkg
- Six force units: ounce, pound, newton, deciNewton, kilopound (kilogram) and gram
- Automatic lock-up for transducer protection
- All transducers supplied with certification
- Individually serialized with matching certificate of calibration traceable to N.I.S.T.

MULTITEST CALIBRATION SYSTEMS INCLUDE:

Product Code	Description	(mechanical) 2000-1	(mechanical) 2000-2	(mechanical) 2000-3	(motorized) 2800-1	(motorized) 2800-3
Various	Digital Monitor	X	X	X	X	X
2000-600-02	Mechanical Loader Max 2000 ft.lbs.	X	X	X	X	X
2000-100-02	Roller/Storage Cabinet	X	X	X	X	X
2000-400-02	4 in 1 Transducer 4 in. lb. to 250 ft. lbs.	X	X	X		
2000-500-02	4 in 1 Transducer Adapter Kit	X	X	X		
2000-4-02	Transducer Range from 5-50 in. ozs.	X	X			
2000-5-02	Transducer Kit-Range 15-200 in. ozs.	X	X			
2000-6-02	Transducer Kit-Range 4-50 in. lbs.	X				
2000-65-02	Transducer Kit-Range 15-150 in. lbs.	X				
2000-7-02	Transducer Kit-Range 30-400 in. lbs.	X				
2000-8-02	Transducer Kit-Range 80-1000 in. lbs.	X				
2000-10-02	Transducer Kit-Range 10-125 ft. lbs.	X				
2000-11-02	Transducer Kit-Range 20-250 ft. lbs.	X				
2000-12-02	Transducer Kit-Range 60-600 ft. lbs.	X				X
2000-13-02	Transducer Kit-Range 100-1000 ft. lbs.	X	X			
2000-14-02	Transducer Kit-Range 200-2000 ft. lbs.	X	X			X
900-0-1KIT	1/4", 50 in. lb. Joint Rate Simulator	X	X			
900-2-01KIT	3/8", 400 in. lb. Joint Rate Simulator	X	X			
900-3-01KIT	3/8", 1000 in. lb. Joint Rate Simulator	X	X			
2000-550-02	Extension Arm Reach up to 80"	X	X		X	X
2000-750-02	Torque Screwdriver Testing Kit	X				
2000-320-0	Weight Set #1	X				
2500-50-0	2 1/2" Calibration Wheel	X				
2000-151-0	5" Calibration Wheel	X				
2000-152-0	10" Butterfly Calibration Wheel	X				
2000-154-0	40" Calibration Arm	X				
390-2-2	4 oz. Calibration Weight Tray	X				
2000-301	8 oz. Calibration Weight Tray	X				
2000-304-0	7.5 lb. Calibration Weight Tray	X				
2000-302-0	15 lb. Calibration Weight Tray	X				
2000-303-0	50 lb. Calibration Weight Tray	X				
2000-250-02	Calibration Stand Kit	X				
2000-260-0	Force (Tensiometer) Testing Kit	X				
2000-261-0	Force (Tension) Gage Kit	X				
2000-262-0	Force (Compression) Gage Kit	X				
2000-263-02	Force Arm Kit-Small and Large Arms	X				
2000-SW	Wedgelink Software	X	X			X
2000-50-3	Cable from Multitest to PC	X	X			X



CDI TORQUE MULTITEST PREMIER CALIBRATION SYSTEM

CDI's All Inclusive Calibration System Model 2000-1

Features

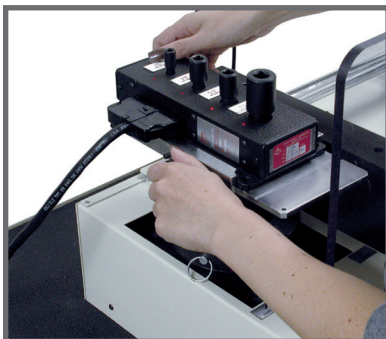
- Our most comprehensive calibration system for torque and force
- Calibrate torque wrenches up to 2000 ft. lbs.
- Check the accuracy and calibrate cable tension meters, tension and compression gauges
- Includes the easy-to-use 4-in-1 transducer kit
- Eleven single transducers ranging from 5 in. oz. up to 2000 ft. lbs.
- Includes torque screwdriver testing kit
- Automatic safety feature locks system to prevent overloading and possible damage to transducers
- Displays eight units of torque and six units of force
- Also includes a calibration stand and all necessary calibration wheels, arms, weights and trays
- Downloading software included

MODEL 2000-1 INCLUDES:

Product Code	Description	Product Code	Description
2000-610-02	MULTITEST Monitor	2000-550-02	Extension Arm Kit for Long Torque Wrenches
2000-600-02	Mechanical Loader 2000 ft. lb. capacity	2000-750-02	Torque Screwdriver Testing Kit
2000-100-02	Roller Cabinet	2000-320-0	No. 1 Weight Set
2000-400-02	4 in 1 Transducer Kit, 4 in. lbs. to 250 ft. lbs.	2500-50-0	2-1/2" Calibration Wheel
2000-500-02	4 In 1 Transducer Adapter Kit	2000-151-0	5" Calibration Wheel
2000-4-02*	Transducer Range From 5 - 50 in. ozs. ($\pm 0.5\%$)	2000-152-0	10" Butterfly Wheel
2000-5-02	Transducer Range From 15 - 200 in. ozs.	2000-154-0	40" Calibration Arm
2000-6-02	Transducer Range From 4 - 50 in. lbs.	390-2-2	4 oz. Weight Hanger
2000-65-02	Transducer Range From 15 - 150 in. lbs.	2000-301	8 oz. Weight Hanger
2000-7-02	Transducer Range From 30 - 400 in. lbs.	2000-304-0	7.5 lb. Weight Hanger
2000-8-02	Transducer Range From 80 - 1000 in. lbs.	2000-302-0	15 lb. Weight Hanger
2000-10-02	Transducer Range From 10 - 125 ft. lbs.	2000-303-0	50 lb. Weight Hanger
2000-11-02	Transducer Range From 20 - 250 ft. lbs.	2000-250-02	Calibration Stand Kit
2000-12-02	Transducer Range From 60 - 600 ft. lbs.	2000-260-0	Tension Meter
2000-13-02	Transducer Range From 100 - 1000 ft. lbs.	2000-261-0	Force Gauge
2000-14-02	Transducer Range From 200 - 2000 ft. lbs.	2000-262-0	Compression Gauge
900-0-1KIT	Joint Rate Simulator 50 in. lbs. capacity	2000-263-02	Force Arm Kit
900-2-01KIT	Joint Rate Simulator 400 in. lbs. capacity	2000-SW	PC Software
900-3-01KIT	Joint Rate Simulator 1000 in. lbs. capacity	2000-50-3	PC Cables Multitest/Suretest

TORQUE TOOLS

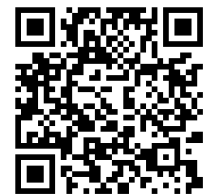
CALIBRATION SYSTEMS



4 in 1 Transducer Kit with Mounting Adapter



Multitest Digital Monitor with Soft Touch Keys.



Snap this code with your smartphone to watch the video!

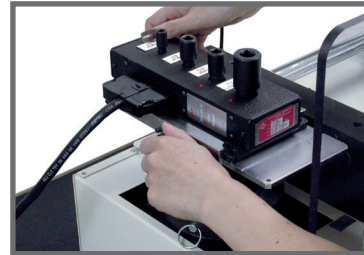
CDI TORQUE MULTITEST SUPREME CALIBRATION SYSTEM

CDI's Torque-Only System Model 2000-2. Listed below are all of the components to CDI's "Supreme" MULTITEST Torque Calibration System. This is our mid-range system for torque, which has a range from 5 in. ozs. to 2000 ft. lbs. Designed for the user who requires precision accuracy and reliability in a torque calibration system. This set includes an extension arm for long torque wrenches and 3 joint rate simulators for testing power tools. (Not for use with impact and pulse tools.) PC compatible software and cables are also included.



MODEL 2000-2 INCLUDES:

Product Code	Description
2000-610-02	Multitest Digital Monitor
2000-600-02	Mechanical Loader Max 2000 ft.lb.
2000-100-02	Roller / Storage Cabinet 55" W x 24" D x 38" H
2000-400-02	4 in 1 Transducer Kit-Range 4 in. lb. to 250 ft. lb.
2000-500-02	4 in 1 Transducer Adapter Kit
2000-4-02*	Transducer Range From 5 - 50 in. ozs. ($\pm 0.5\%$)
2000-5-02	Transducer Kit-Range 15-200 in. oz.
2000-12-02	Transducer Kit-Range 60-600 ft. lb.
2000-13-02	Transducer Kit-Range 100-1000 ft. lb.
2000-14-02	Transducer Kit-Range 200-2000 ft. lb.
2000-550-02	Extension Arm for Long Torque Wrench, Reach up to 80"
900-0-1KIT	1/4" drive, 50 in. lb. Capacity Joint Rate Simulator
900-2-01KIT	3/8" drive, 400 in. lb. Capacity Joint Rate Simulator
900-3-01KIT	3/8" drive, 1000 in. lb. Capacity Joint Rate Simulator
2000-SW	Wedglink Software
2000-50-3	PC Cables Multitest/Suretest



4 in 1 Transducer Kit with Mounting Adapter.

CDI TORQUE MULTITEST BASIC CALIBRATION SYSTEM

Listed below are all of the components to CDI's "Basic" MULTITEST Calibration System Model 2000-3. The system includes the 4 in 1 transducer, which is capable of calibrating torque tools from 4 in. lbs. through 250 ft. lbs. Also included is the 2000 ft. lb. loader and the MULTITEST monitor.

MODEL 2000-3 INCLUDES:

Product Code	Description
2000-610-02	Multitest Digital Monitor
2000-600-02	Mechanical Loader Max 2000 ft.lb.
2000-100-02	Roller / Storage Cabinet 55" W x 24" D x 38" H
2000-400-02	4 in 1 Transducer Kit-Range 4 in. lb. to 250 ft. lb.
2000-500-02	4 in 1 Transducer Adapter Kit



Snap this code with your smartphone to watch the video!

Snap-on Industrial Brands offers factory torque training at our manufacturing facility in the City of the Industry, California. We also offer the same top tier training on-site at your location. Training includes a certificate of completion for each student. All of our training is full immersion hands-on training, not just reading from an instruction manual. Contact your representative for details.



Dual Mode Function Manual and Automatic

CDI TORQUE MULTITEST MOTORIZED SYSTEMS

CDI has taken torque calibration to a higher level. Increase your productivity with the 2000 ft. lb. fully automatic motorized loader. Designed for the high volume calibration laboratory that requires a high-speed, automatic torque calibration system. In the automatic mode, the MULTITEST Motorized System Model 2800-1 will cycle, test and calibrate most torque wrenches. With our optional kits, you can calibrate torque screwdrivers, cable tensiometers, tension and compression gauges utilizing the manual mode, (hand crank only).

The MULTITEST Motorized System consists of the Monitor, Motorized Loader, Roller Cabinet and Extension Arm. Please order the transducers separately based on your individual needs. (Not for use with impact and pulse tools.)

Features

- Automatic sensor recognition with "smart" transducers
- Range: 5 in. oz. to 2000 ft. lb. torque (bi-directional)
- Accuracy: $\pm 0.25\%$ of indicated value, cw & ccw, from 10% to 100% of full scale
- Dual mode function (manual & automatic)
- Automatic speed control
- Built-in, low profile serial printer
- Date and time stamp for stored values
- Statistical analysis performed on stored data
- Emergency stop button
- Programmable manual or automatic options for clear, store and print functions
- Recall and review of stored torque values
- Track, peak, first peak, power tool modes
- RS232C port, analog output
- Eight torque measurement units: in. oz., in. lb., ft. lb., Nm, dNm, cNm, mkg and cmkg
- Six force units: ounce, pound, newton, deciNewton, kilopound and gram
- Automatic lock-up for transducer protection
- All transducers are individually serialized with matching certificate of calibration traceable to N.I.S.T.

MODEL 2800-1 INCLUDES:

Product Code	Description
2000-810-01	MULTITEST Digital Monitor
2000-800-02	Motorized Loader with roller cabinet
2000-550-02	Extension Arm for Long Torque Wrench, Reach up to 80"

MODEL 2800-3 INCLUDES:

Product Code	Description
2800-1	Base System (see system for details)
2000-400-02	4-in-1 Transducer Kit, 4 in. lbs. to 250 ft. lbs.
2000-500-02	Bracket for 4-in-1 Transducer Adapter Kit
2000-12-02	Transducer Range from 60 - 600 ft. lbs.
2000-14-02	Transducer Range from 200 - 2000 ft. lbs.
2000-SW	Software
2000-50-3	PC Cables Multitest/Suretest



Snap this code with your smartphone to watch the video!



Snap-on Industrial Brands offers factory torque training at our manufacturing facility in the City of the Industry, California. We also offer the same top tier training on-site at your location. Training includes a certificate of completion for each student. All of our training is full immersion hands-on training, not just reading from an instruction manual. Contact your representative for details.

CDI TORQUE SURETEST CALIBRATION SYSTEMS

The SURETEST Model 5000-1 is a laboratory grade instrument which captures torque measurements with a user friendly interface. It features a large LCD graphic display. It may be used with a single transducer or can be used as the principal component of a Torque Calibration System.

The SURETEST Model 5000-2 is a midrange torque system with a range of 5 in. ozs. to 2000 ft. lbs.

The SURETEST features versatile data acquisition capabilities including measurement storage retrieval, statistical analysis and automatic downloading to an external printer/computer. The SURETEST stores, recalls and downloads up to 3000 torque readings. The system provides readings with an accuracy of $\pm .25\%$ of indicated value and features multiple languages: English, Spanish, French, Japanese and German.

The SURETEST Torque Calibration System may be ordered in three different combinations. The "Premier", the "Supreme" and the "Basic" systems are described on these pages. In addition, you may order any component separately to build your own "custom" system.

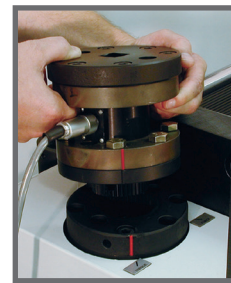


Features

- Large LCD graphical display
- Five built-in languages
- Date and time stamp
- Dual RS-232 ports, analog output
- SPC built-in
- Automatic downloading
- Accuracy: $\pm 0.25\%$ of indicated value, CW & CCW, from 10% to 100% of full scale
- Transducers available from 5 in. ozs. to 2000 ft. lbs. of torque
- All transducers are "smart" (plug and play)
- Readout in eight different engineering units
- Stores and recalls 5000 torque values (date & time)
- Fully automatic voltage input adaptation (100 - 240 VAC input)
- Data is saved when SURETEST is turned off
- All transducers are individually serialized with matching certificate of calibration traceable to N.I.S.T.



Set-up is quick and easy utilizing soft touch keys.



Easy, quick change transducers.

CDI TORQUE SURETEST CALIBRATION SYSTEMS INCLUDE:

Product Code	Description	5000-1 Premier	5000-2 Supreme	Product Code	Description	5000-1 Premier	5000-2 Supreme
5000-ST	Suretest Monitor w/Cable and Case	x	x	2000-320-0	Weight Set #1	x	
2000-600-02	Mechanical Loader Max 2000 ft.lb.	x	x	2500-50-0	2 1/2" Calibration Wheel	x	
2000-100-02	Roller / Storage Cabinet 55" W x 24" D x 38" H	x	x	2000-151-0	5" Calibration Wheel	x	
2000-400-02	4 in 1 Transducer Kit-Range 4 in. lb. to 250 ft. lb.	x	x	2000-152-0	10" Butterfly Calibration Wheel	x	
2000-500-02	4 in 1 Transducer Adapter Kit	x	x	2000-154-0	40" Calibration Arm	x	
2000-4-02	Transducer Kit-Range 5-50 in. oz.	x	x	390-2-2	4 oz. Hanger Calibration Weight Tray	x	
2000-5-02	Transducer Kit-Range 15-200 in. oz.	x	x	2000-301	8 oz. Hanger Calibration Weight Tray	x	
2000-12-02	Transducer Kit-Range 60-600 ft. lb.	x	x	2000-304-0	7.5 lb. Calibration Weight Tray	x	
2000-13-02	Transducer Kit-Range 100-1000 ft. lb.	x	x	2000-302-0	15 lb. Calibration Weight Tray	x	
2000-14-02	Transducer Kit-Range 200-2000 ft. lb.	x	x	2000-303-0	50 lb. Calibration Weight Tray	x	
2000-550-02	Extension Arm for Long Torque Wrench, Reach up to 80"	x	x	2000-250-02	Calibration Stand Kit	x	
900-0-1KIT	1/4" drive, 50 in. lb. Capacity Joint Rate Simulator	x	x	2000-SW	Wedgeline Software	x	x
900-2-01KIT	3/8" drive, 400 in. lb. Capacity Joint Rate Simulator	x	x	2000-50-3	PC Cables Multitest/Suretest	x	x
900-3-01KIT	3/8" drive, 1000 in. lb. Capacity Joint Rate Simulator	x	x				
2000-750-02	Torque Screwdriver Testing Kit for 2000-600-02 Loader	x					

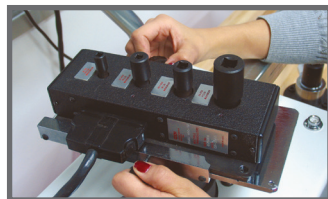
CDI TORQUE SURETEST™ BASIC CALIBRATION SYSTEM

The SURETEST Model 5000-3 is a laboratory grade instrument which captures torque measurements with a user friendly interface. It features a large LCD graphical display. It may be used with a single transducer or can be used as the principal component of a Torque Calibration System.

The SURETEST features versatile data acquisition capabilities including measurement storage, retrieval, statistical analysis and automatic downloading to an external printer/computer. The SURETEST stores and downloads up to 3000 torque readings. The system provides readings with an accuracy of +/- .25% of indicated value and features multiple languages: English, Spanish, French, Japanese and German.

Features

- Large LCD graphical display
- Five built-in languages
- Date and time stamp
- Dual RS-232 ports, analog output
- SPC built-in
- Automatic downloading
- Accuracy is +/- 0.25% of indicated value, CW & CCW, from 10% to 100% of full scale
- Transducers available from 5 in. ozs. to 2000 ft. lbs. of torque
- All transducers are "Smart" (Plug and Play)
- Readout in eight different engineering units
- Stores and recalls 3000 torque values (Date & Time)
- Fully automatic voltage input adaptation (100 - 240 VAC input)
- Data is saved when SURETEST is turned off
- All transducers supplied with certification
- All transducers are individually serialized with matching certificate of calibration traceable to N.I.S.T.



4 in 1 Transducer Kit with Mounting Adapter.

MODEL 5000-3 INCLUDES:

Product Code	Description
5000-ST	Suretest Monitor w/Cable and Case
600TL-2	Mechanical Loader 600 ft. lb.
2000-400-02	4 in 1 Transducer Kit-Range 4 in. lb. to 250 ft. lb.
2000-500-02	4 in 1 Transducer Adapter Kit
2000-12-02	Transducer Kit-Range 60-600 ft. lb.



CUSTOM CALIBRATION SYSTEMS

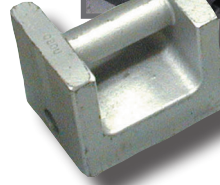
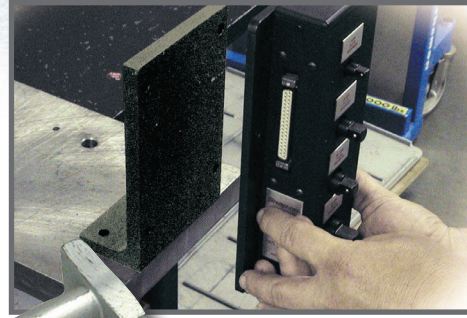
Don't see the exact system you're looking for? Please call customer service to request a quotation on a custom calibration system. We will provide assistance designing a testing system to fit your application and specifications.



Snap this code with your smartphone to watch the video!

CDI TORQUE TEST/CALIBRATION ACCESSORIES

CDI's calibration equipment is expressly designed to calibrate the complete line of CDI Torque Transducers. All weight trays, arms and brackets supplied by CDI Torque Products are built with precision accuracy to meet the demanding needs of the calibration professional. All calibration wheels and arms are certified as to length, and supplied with a certificate of accuracy, which is traceable to N.I.S.T. (National Institute of Standards and Technology). Weights, trays and hangers are weight certified and are also supplied with a certificate of accuracy traceable to N.I.S.T. Mass Classification is Class F. Mating adapters are available to facilitate the use of the various components. Written procedures are available upon request for calibrating any of CDI's manufactured torque products.



CDI TORQUE TEST/CALIBRATION ACCESSORIES

Product Code	Description
2000-750-02	Torque Screwdriver Testing Kit for 2000-600-02 Loader
2000-750-06	Torque Screwdriver Testing Kit for 600TL Loader
2000-320-0	Weight Set #1 - For all Transducers
2000-321-0	Weight Set #2 - For 200 in. oz. to 600 ft. lbs.
2000-322-0	Weight Set #3 - For 600 ft. lb. to 2000 ft. lbs.
390-2-2	4 oz. Hanger Calibration Weight Tray
2000-301	8 oz. Hanger Calibration Weight Tray
2000-302-0	15 lb. Calibration Weight Tray
2000-303-0	50 lb. Calibration Weight Tray
2000-304-0	7.5 lb. Calibration Weight Tray
2000-250-02	Calibration Stand Kit
2500-50-0	2 1/2" Calibration Wheel
2000-151-0	5" Calibration Wheel
2000-152-0	10" Butterfly Calibration Wheel
2000-154-0	40" Calibration Arm
2500-154-0	20" Calibration Arm Dual Sided
2000-152-3	1/2" x 3/8" Male & Female Reducer Adapter
2000-226-3	3/4" x 1/2" Male & Female Reducer Adapter
2000-226-2	1" x 3/4" Male & Female Reducer Adapter
2000-0154-18	1 1/4" x 3/4" Male & Female Reducer Adapter
S/2000-221-0	1 1/4" x 3/4" Flange Adapter for 40" Arm
2000CALKIT	Complete Calibration Kit up to 2000 ft.lbs.
342-35	Transducer Mounting Bracket up to 1000 in. lb. (TB342/1)
342-36	Transducer Mounting Bracket 125-600 ft. lb. (TB342/2)
2000-150-03	Transducer Bracket, 1000-2000 ft.lb.

SOCKET ADAPTERS FEMALE X FEMALE

Product Code	Opening	x	Opening
260-27	1/4" hex	x	1/4" sq
342-40	1/4" sq	x	1/4" sq
342-41-1	1/4" sq	x	3/8" sq
342-41-2	3/8" sq	x	3/8" sq
65-26-2	1/2" sq	x	3/8" sq
65-26-3	1/2" sq	x	1/2" sq
65-78-1	1/2" sq	x	3/4" sq
65-78-2	3/4" sq	x	3/4" sq
75-25-1	1" sq	x	3/4" sq
75-20	1" sq	x	1" sq



Turns any ordinary ratchet wrench into a highly accurate digital torque tool.



1600-MT2W



MULTITORQ™ TORQUE ACQUISITION METER

The MULTITORQ™ torque acquisition meter displays torque readings from sensors that attach between sockets and driver. MULTITORQ™ is a highly versatile torque analyzer/data acquisition system that can be used with sockets, extensions, universal joints, ratcheting drivers or any combination of these. Sensors are sold separately, available in 8 ranges from 2-20 in. ozs. to 150-1500 ft. lb. Accuracy $\pm 1\%$ of reading ($\pm 2\%$ reading for 20 in. oz., and 10 in. lb.) 10-100% of sensor range.

The torque analyzer features a wide angle viewing LCD display with selectable readouts; ft. lb., in. lb., in. oz., Nm, dNm, mkg, and cmkg units. Torque target settings are entered via a push button membrane keyboard. High and low torque limits are adjustable to give an audible and visual alarm. The user selects Track mode to display torque values as they are applied, or Peak mode to display the highest torque value applied.

Features

- 4 digit w/ alpha & numerical function flags
- 4 digit, 8000 counts display capacity
- Accuracy: $\pm 1\%$ of indicated value, cw & ccw, from 10% to 100% of full scale, 201-O-MT2W and 101-I-MT2W are $\pm 2\%$
- Soft touch keys: hi/lo alarm, zero tare, set-up, units, store/recall/clear, send, statistics, enter
- Units of measurement: ft. lb., in. lb., in. oz., Nm, dNm, mkg and cmkg
- Operating Temperature: 40 to 100 Degrees Fahrenheit (4 to 43 Degrees Celsius)
- Storage: -20 to 50 degrees C (-2 to 122 degrees F)
- Humidity: up to 90%, non-condensing
- Dimensions: 3" wide, 2.5" high (3" with belt clip), 6" deep
- Weight: 1 pound
- Data storage/recall: 3500 measurements
- Mini-USB: download port
- Three AA Alkaline Batteries (included)
- Reads bi-directionally (cw and ccw)

Standard Set Includes:

Product Code	Description
1600-MT2W	MULTITORQ™ Unit includes:
PB57A	Carrying Case
AW2-1/2D	Hex Key (Battery Install)
USBATOMINIB	Mini-USB Cable
VES27661	Belt Clip

MULTITORQ™ TORQUE & DATA COLLECTION SENSORS

Sensors: (sold separately)

Product Code	Torque Range	Drive (In.)
201-O-MT2W	2 - 20 in. oz.	¼
101-I-MT2W	1 - 10 in. lb.	¼
501-I-MT2W	5 - 50 in. lb.	¼
2001-I-MT2W	20 - 200 in. lb.	¼
1002-F-MT2W	10 - 100 ft. lb.	¾
2503-F-MT2W	25 - 250 ft. lb.	½
6004-F-MT2W	60 - 600 ft. lb.	¾
15005-F-MT2W	150 - 1500 ft. lb.	1

Certificate of accuracy traceable to N.I.S.T. supplied with each transducer. All components ordered separately.



501-I-MT2W

2001-I-MT2W

1002-F-MT2W

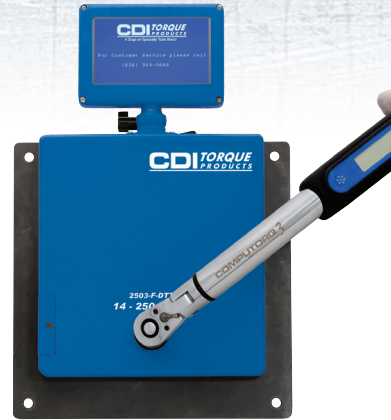
2503-F-MT2W

CDI TORQUE DIGITAL TORQUE TESTER™ (DTT)

TEST THE HEALTH OF YOUR TORQUE WRENCHES – ANYWHERE WITH THE DIGITAL TORQUE TESTER.

Utilizing the testing protocol and standards developed by the American Society of Mechanical Engineers (ASME)

The Digital Torque Tester™ (DTT) is designed to be an affordable torque tester that can be mounted on a wall or with the optional table bracket to allow the operator to conveniently test torque wrenches and torque screwdrivers. It features an easy to use touch pad screen to capture peak torque values during a test in real time, and download stored torque data to a PC. All DTT torque testers are sold in a kit with the tester, carrying case and AC/DC power supply.



CDI TORQUE DIGITAL TORQUE TESTER™ (DTT)

Product Code	Female Drive	Range English	Range cNm, Nm	Range, kgcm
1001-O-DTT	1/4"	10 - 100 in.oz.	7.06 - 70.6 cNm	.720 - 7.20 cmkg
8001-O-DTT*	1/4"	20 - 800 in.oz.	14.1 - 565 cNm	1.44 - 57.6 cmkg
501-I-DTT	1/4"	5 - 50 in.lb.	56 - 565 cNm	5.76 - 57.60 cmkg
1001-I-DTT	1/4"	10 - 100 in.lb.	113 - 1113 cNm	11.5 - 115 cmkg
2502-I-DTT	3/8"	25 - 250 in.lb.	2.82 - 28.25 Nm	28.80 - 288.0 cmkg
4002-I-DTT	3/8"	40 - 400 in.lb.	4.52 - 45.2 Nm	46 - 460 cmkg
10002-I-DTT	3/8"	100 - 1000 in.lb.	11.3 - 113 Nm	115 - 1152 cmkg
2503-F-DTT	1/2"	25 - 250 ft.lb.	33.8 - 338 Nm	3.45 - 34.5 kgm
6004-F-DTT	3/4"	60 - 600 ft.lb.	81.3 - 813 Nm	8.30 - 83 kgm



Snap this code with your smartphone to watch the video!

Accuracy: ± 0.50% 10% to 100% CW & CCW of indicated test value @ 25° C
 *Accuracy: ± 1% CW & CCW from 2-1/2% to 100% of full scale. New for Torque Screwdriver.
 Units of Measure: Nm, kgcm, ft.lb., in.lb., in.oz., kgm, cNm
 Operation Modes: PEAK, FIRST PEAK
 Operating Temperature: 10 to 32° C (50 to 90° F)
 Storage Temperature: -20 to 50° C (-2 to 122° F)
 Humidity: 85% Relative Humidity @ 21° C (70° F)
 Power Supply: Included 9-volt A/C D/C adapter. 6 AA batteries included.
 Data Storage/Recall: Memory Capacity – 500 Records
 Dimensions: W - 10" x H - 16" x D - 2.5"
 Weight: (Tester Only) - 10.7 lbs., (with Carrying Case) - 17.4 lbs.
 ** Includes 1/2" - 3/8" Reducer

DTT OPTIONAL ACCESSORIES

Product Code	Description
2344-0050-03	Table Mounting Bracket for DTT Series Testers
2344-0051-02	Male SQ Adapter 3/8" x 3/8"
2344-0051-11	1/4" to 1/4" Male x Male Square Adapter
2344-0051-13	1/2" to 1/2" Male x Male Square Adapter
2344-0051-16	3/8" to 1/2" Male x Male Square Adapter
2344-0051-19	3/4" to 1-1/4" Male x Male Square Adapter

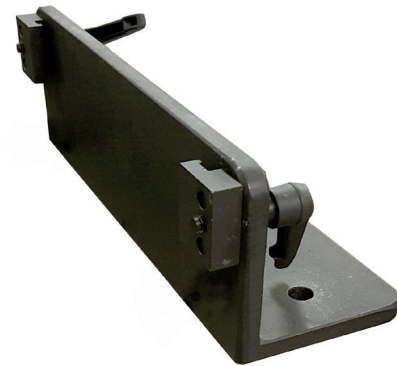


Table Mounting Bracket

TORQUE COMPARATOR

Large dual scale. Perfect when a quick check of your wrench is required before usage. Compact design allows for mounting on any flat surface in either horizontal or vertical position. Torque Comparator is calibrated on torque testers which are certified using test bars and "F" weights traceable to NIST. +/- 2% accuracy from 20% of full scale to full scale. Calibration Compliance Certificate.

TORQUE COMPARATOR

Product Code	Square Drive	English Capacity	Inc.	Nm, Capacity	Inc.
1753-TC	1/2"	175 ft. lbs.	5 ft. lbs.	230 Nm	10 Nm
6004-TC	3/4"	600 ft. lbs.	5 ft. lbs.	800 Nm	20 Nm



Made in U.S.A.



CDI TORQUE ETT™ ELECTRONIC TORQUE TESTER

The ETT (Electronic Torque Tester) is CDI's portable torque tester. Unlike a torque calibration system, which can be used to generate a torque wrench certification, the ETT is a portable, battery powered stand-alone torque tester. It can also be used on AC power. Its primary use is to check the accuracy of dial and click type torque wrenches and torque screwdrivers to maintain their accuracy in between calibrations. With the addition of a joint rate simulator, ETT can also check stall and clutch type pneumatic and electronic torque tools. It should not be used with any impact or pulse type tools. There are eight models with torque ranges from 10 inch ounces up to 600 foot pounds.

Features

- Integral transducer and sturdy housing allow mounting in virtually any position
- Unique neck design allows the operator to see the LCD display when testing long torque wrenches
- Accuracy: ± 0.5% of indicated value, cw & ccw, from 10% to 100% of full scale + 1 increment or least significant digit
- Four modes of operation: peak mode, power tool mode, first peak mode and track mode
- Dual scale (English/Nm or English/cNm, dNm)
- Auto/manual display reset
- Reads bi-directionally (cw and ccw)
- Rechargeable NiCad batteries
- Designed to be a sturdy low cost tester, ETT can be placed on the wall in the factory, on a portable cart or on a bench allowing operators to test torque wrenches or power tools without having to leave their station

CDI TORQUE ELECTRONIC TORQUE TESTERS (ETT)

Product Code	Torque Range SAE	Torque Range Newton Meter	Drive Size
1001-O-ETT	10 - 100 in. oz.	7.0 - 70.6 cNm	¼"
4001-O-ETT	40 - 400 in. oz.	28 - 280 cNm	¼"
501-I-ETT	5 - 50 in. lb.	5.6 - 56 dNm	¼"
1001-I-ETT	10 - 100 in. lb.	11.3 - 113 dNm	¼"
2502-I-ETT	25 - 250 in. lb.	28 - 280 dNm	¾"
10002-I-ETT	100 - 1000 in. lb.	113 - 1130 dNm	¾"
2503-F-ETT	25 - 250 ft. lb.	34 - 339 Nm	½"
6004-F-ETT	60 - 600 ft. lb.	81 - 813 Nm	¾"

- Use joint simulator with Power Tools
- Power adapter cord included - Part #P115-30
- Bench bracket available - Part #343-25
- Socket adapter included with tester (female to female) suited for size of square drive of ETT



CDI TORQUE DIGITAL TORQUE CHECKER

Perfect for checking mechanical and digital torque wrenches regularly before use. Simple operation and affordable, to allow convenient mounting close to each departments where torque wrenches are used frequently

Product Code	Square Drive	English Capacity	Nm. Capacity	Weight
2503-F-DTC	½"	25-250ftlbs	34-339 Nm	4.9 lbs
1002-F-DTC	1/2"	5-100FT LBS	-	4.9 LBS
DTS82-69	A/C Adaptor			
3325-0440-01	Bench Mount Bracket			



Features

- Simple operation enables any torque wrench user to quickly check wrench accuracy
- Uses 3 AA batteries (Included), LCD displays battery life indicator
- Large backlit LCD screen
- Audio beep on overtorque (125% of full scale)
- 3/8" Adapter included
- Accuracy +/- 1%
- Push Button Mode Select: First peak, Peak Hold, Tracking
- Units: Ft-Lb, In-Lb, Nm
- Includes Certificate of Calibration
- Compact design for mounting on any flat surface in horizontal or vertical position
- CE Approved
- Overall dimensions are: 4 3/4 x 13 1/2 x 2 3/16



Snap this code with your smartphone to watch the video!



WILLIAMS®

USA CUSTOMER SERVICE

TOLL FREE: USA 800-446-7404

FAX: 800-877-5687

Email: williams@snapon.com

SALES HEADQUARTERS

Williams

2801 80th Street
Kenosha, WI 53143

CANADA CUSTOMER SERVICE

TOLL FREE: 800-296-4787

FAX: 888-447-8665

Email: canadawilliams@snapon.com

DISTRIBUTION CENTER

Williams

6969 Jamesson Road
Midland, GA 31820

WILLIAMS-INDUSTRIAL.COM