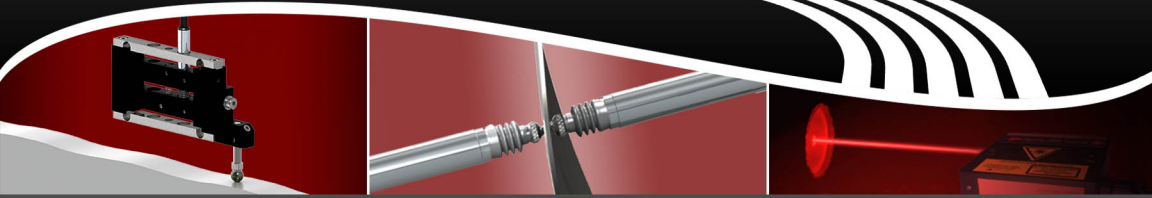
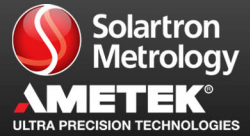


Solartron Metrology - Line card

*Aerospace - Automotive - Non-contact - Dynamic
Electronics - Bearing - Process Automation*



A world leader in high precision linear measurement solutions for quality control, test and measurement, and machine control: Solartron Metrology manufactures high quality digital and analogue gauging probes, displacement transducers, non-contact sensors, and instrumentation.

Gauging

LVDT (Analogue and Digital)

- Spring push, pneumatic, jet or vacuum retract
 - Up to 0.05% F.S. Linearity, 0.01 μm resolution, 0.02 μm repeatability
 - Extremely rugged with IP65 rating, linearity of 0.05%
- Measuring ranges from 0.5 to 20 mm



Compact

- Small (<25 mm length) and robust
 - High resolution (as low as 0.01 μm); High repeatability (as low as 0.15 μm); High accuracy (up to +/- 0.05% of reading, Digital)
- Measuring ranges from 0.5 to 2 mm



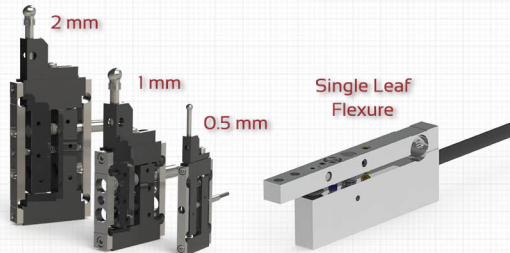
Feather/Ultra Feather Touch

- Lighter tip forces for glass, electronics, and other delicate surfaces
 - Feather Touch: As low as 0.3 N of tip force; Can withstand side load
 - Ultra Feather Touch: 0.03 to 0.05 N of tip force; Alternative to non-contact sensors
- Measuring ranges from 2 to 20 mm



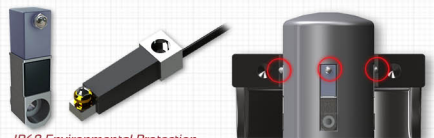
Flexures

- Ideal for harsher and awkward gauging applications
 - Tested to 20 million cycles; High resolution, repeatability and accuracy
 - Range of sizes
- Measuring ranges from 0.5 to 2 mm



Mini Probe

- Compact flexure for bore gauging and other tight applications
 - Sideload capability
 - Up to 0.1 μm repeatability
- 0.5 and 1 mm measuring ranges



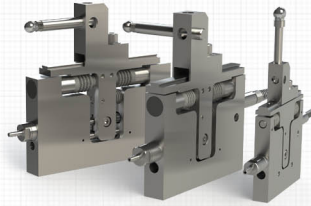
IP68 Environmental Protection

For more information, please visit www.solartronmetrology.com - Tel: +44 (0) 1243 833333



Block Gauges

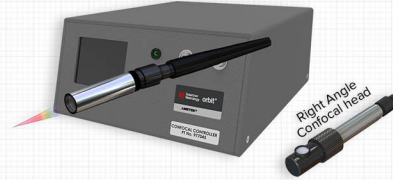
- Precision measurements of bores, cavities, and other awkward dimensions
- Rugged design
- Multiple configurations, including pneumatic and spring
 - 2, 5, and 10 mm measurement ranges



Non-contact

Orbit® Confocal

- Non contact chromatic confocal sensor with 8 mm diameter head
- 1.5 mm & 5 mm range
- Measure Clear Materials with one sensor
- Dual Channel System available



Orbit® LT and LTH

- High precision non-contact lasers for gauging
- Up to 0.02% F.S. accuracy and 0.0076 µm resolution (LTH)
- Seamlessly intergrates with other Orbit® Digital Probes
- Fast, easy and flexible networking
 - 15 and 50 mm range for Orbit LT. 2, to 200 mm range for Orbit® LTH



Wireless

WiGauge™

- High precision device using bore and width gauges
- Up to 15 metre transmission range via Class 1 Bluetooth®
- Detachable battery with up to 8 hours continuous life
- Optional LCD screen to view real time measurement data



Displacement

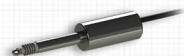
S-Series and Series Rugged

- Free core and guided available; Multiple mounting options
- 19 mm stainless steel body; Signal conditioning can be internal or separate
- Options include IP65, IP67, high temp, submersible probes, IP68 rated
- Digital or 4-20 mA outputs available
 - Measuring ranges of 5 to 300 mm



G-Type

- Gauging probe with integrated signal conditioning mounted to probe
- DC Unipolar, BiPolar, and 4-20 mA outputs available
- Excellent repeatability: < 0.15 µm
 - Measuring ranges of 2 to 20 mm



Optimum

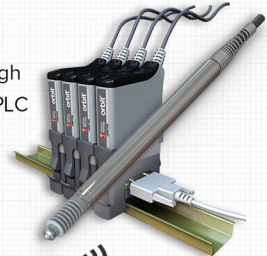
- 9.52 mm diameter narrow bodied high performance sensors
- Free core and guided available
- Larger radial bore clearance
 - Measuring ranges of 3 to 50 mm



Orbit® 3 Network

Brief Introduction

- A fully formed digital measurement system that makes it simple to interconnect high accuracy Solartron instruments, and other sensors to your computer, network, or PLC
- Calibrated sensors with digitised outputs via Probe Interface Electronics modules
- Network up to 150 units, including 3rd party sensors



Interface Modules

 PIM EtherNet/IP Interface	 MODIM Interface	 RS232 Interface	 USB Interface	 Wireless Interface
• Connects Orbit® to EtherNet/IP network	• For Modbus PLC	• Up to 150 sensors	• Dynamic modes available	• Connect Orbit® 3 stack to PC via Bluetooth®

Input Modules

 Encoder Input	 Analogue Input	 Digital Input/Output	 Digimatic Input	 Strain Gauge Input
• For TTL, incremental	• For DC or 4-20 mA	• 8 pins I/O into PLC	• Compatible to Digimatic Instruments	• Connect to force or pressure gauge

Readouts / Instruments

 SI 1500	 SI 3500	 SI 5500	 SI 7500
• Single Channel (LVDT, DC/4-20 mA & Orbit® versions available)	• Dual Channel (LVDT, DC/4-20 mA, & Orbit® versions available)	• Up to 31 Channels	• Up to 16 Channels

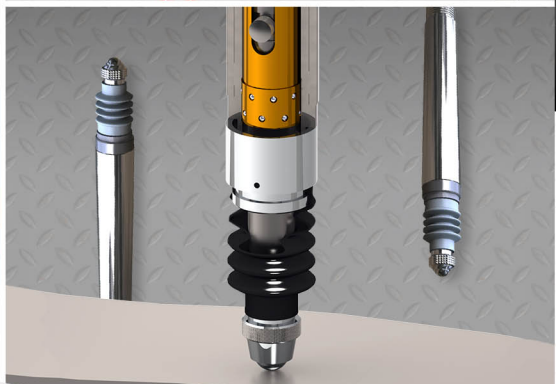
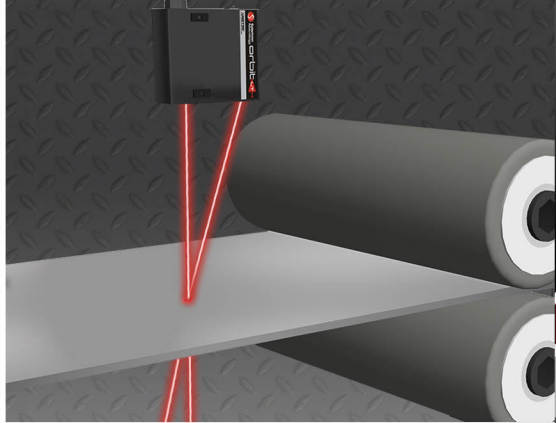
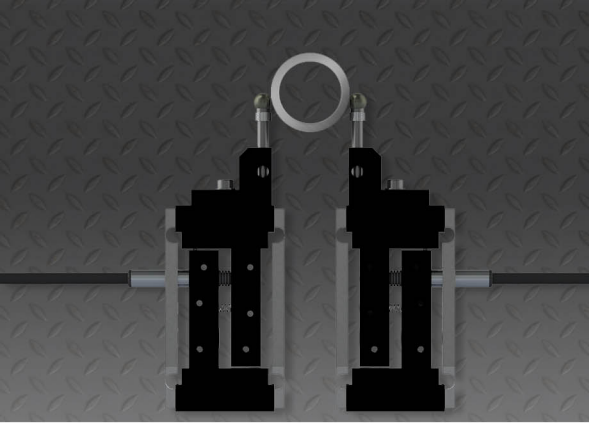
Orbit® ACS (Automation Control System)

- Stand alone Orbit® systems or built for PLC interface
- 1-4 channels, with Modbus, RS485, RS232, I/O
- For use with both Orbit® 3 probes and non-contact lasers
 - Pneumatic and spring available from 0.5 to 20 mm range



Signal Conditioning

 DIN Rail Conditioner	 OD Series	 BICM	 Absolute TTL
• DC, 4-20 mA	• AC, DC Power • DC, 4-20 mA options	• +15/-15 V or 24 V Power • DC output	• Incremental or absolute, for TTL



UK

Solartron Metrology
Bognor Regis, West Sussex, PO22 9ST
Tel: +44 (0) 1243 833333
Fax: +44 (0) 1243 833332
Email: sales.solartronmetrology@ametek.com

France

Ametek SAS
Solartron Metrology Division
Elancourt, 78990 France
Tel: +33 (0) 1 30 68 89 50
Fax: +33 (0) 1 30 68 89 99
Email: info.solartronmetrology@ametek.fr

Germany

Ametek GmbH
Solartron Metrology Division
40670 Meerbusch
Tel: +49 (0) 2159 9136 500
Fax: +49 (0) 2159 9136 505
Email: vertrieb.solartron@ametek.de

Brazil

AMETEK do Brasil, Ltda
Rod. Eng Ermenio de Oliveira Penteadou, Km 57, SP75
Bairro Tombadouro
13337-300, Indaiatuba, SP, Brasil
Tel: 55 19 2107 4126

China

Ametek Commercial Enterprise (Shanghai)
Co., Ltd
Shanghai, 200131, China
Tel: +86 21 5763 2509
Email: china.solartronmetrology@ametek.com

North America

Solartron Metrology
USA Central Sales Office
Gastonia, NC 28054
Tel: +1 800 873 5838
Email: usasales.solartronmetrology@ametek.com

India

Contact Solartron Metrology UK
Tel: +44 (0) 1243 833333
Fax: +44 (0) 1243 833332

Elsewhere we have a global network of distribution partners providing local sales and technical support.



www.solartronmetrology.com

