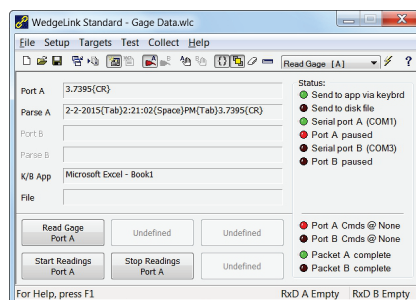


## About Keyboard Wedges

All Windows programs are designed to accept the characters typed from the computer keyboard. But very few programs can accept the measurement data sent from gage devices connected to a computer's serial or USB port.

Keyboard wedges were designed to address this issue. Available in "software" and "hardware" configurations, keyboard wedges convert the incoming gage data into the "keystroke" format compatible with all Windows programs. Microsoft Excel and Microsoft Access are two commonly used programs requiring a keyboard wedge.

## Software Keyboard Wedges



Lite & Standard Editions

Software wedges provide more data collection options than hardware wedges. For example, WedgeLink software can monitor two gage devices simultaneously and remotely request gage readings using the "Send Command" feature. WedgeLink software is offered in two versions – Lite and Standard.

- **WedgeLink Lite** offers basic keyboard wedge functions with limited parsing features.
- **WedgeLink Standard** offers expanded keyboard wedge functions including extensive data parsing and formatting options.

MicroRidge offers a free 3-day evaluation program for download. It includes both versions, so you can determine which best addresses your needs before purchasing. **Important Note! If your gage device only offers USB output, you must use a "software" keyboard wedge.**

## Hardware Keyboard Wedges



WedgeLink SP



WedgeLink AT

Hardware wedges provide an easy-to-use alternative and are preferred for most "shop floor" situations. The keyboard wedge function is built into the product so it's always ready to use; simply open your data collection program and begin taking measurements. Hardware wedges are also tamper-proof as the formatting is stored internally and not accessible to the operator.

- **WedgeLink SP** is a "plug & play" wedge for serial devices. No setup required; simply connect your gage and take a measurement. No parsing offered; for gages that output the measurement only.
- **WedgeLink AT** is our most advanced hardware wedge for serial devices. It offers extensive parsing features, plus auto-detect and user-selectable communications parameters. Once the initial setup is completed, this device is as simple for the operator to use as a "plug & play" wedge.