



The ZEISS COMET®LED 2
3D Scanning / Blue LED Fringe Projection

Measuring is simple and quick
with the ultra-compact 3D sensor



ZEISS COMET®L3D 2

The ultra-compact 3D sensor offers great flexibility, a high measuring speed and impressive performance

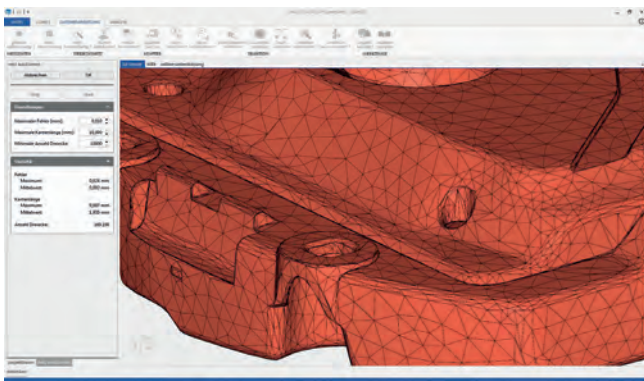
With the ZEISS COMET L3D 2, you're using the latest sensor technology and project-orientated software for simple and reliable 3D data capture.

Map the 3D data of your components quickly and accurately and gain increased scope for a multitude of measuring tasks thanks to the unique flexibility of the system.

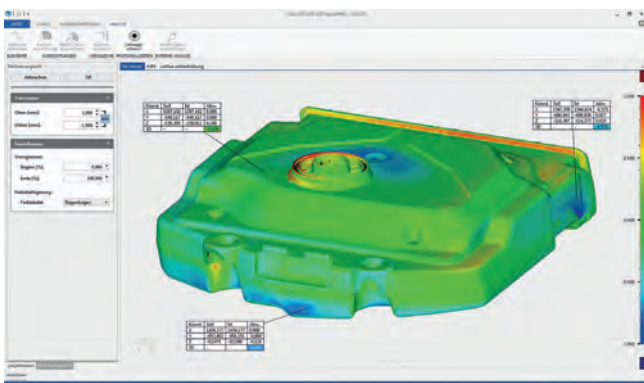
The high-performance software platform colin3D ensures a consistently efficient and project-oriented procedure during the entire measuring process.



The right sensor for every application: Customize the measuring field (45 - 500 mm) quickly by simply changing the lens



colin3D measuring and evaluation software: Quick triangular network computation (above) using high-quality data reduction, simple false color comparison (below)



Achieve optimal measurement results quickly and easily

In just a few simple steps and without any lengthy preparation, the ZEISS COMET L3D 2 sensor is ready for use - enabling you to concentrate on measuring.

This comprehensive solution uses the latest sensor technology and the project-oriented software colin3D for data capture and data processing. It affords you a high level of efficiency in operating sequences and generates high-quality measurement data. Thanks to the minimal working distance, it is possible to work in cramped conditions without any difficulty.

Designed for mobile and flexible use

Do you value flexible application possibilities? The innovative sensor system is extremely compact and light, meaning you can transport it to different application sites without any difficulty. Simple on-site calibration ensures that you can quickly change the measuring field by swapping the lenses. It's fast and easy, and soon the system is ready for the next measuring task.

High precision for demanding applications

The ZEISS COMET L3D 2 delivers excellent data quality and highly accurate measuring results, making the system the ideal solution for demanding applications in quality inspection. With the colin3D software, you'll generate easy false color comparisons for individual analysis as well as reports for documenting measuring results.

A vast range of applications

- Quality control / inspection
- Tool and model making
- Design
- Rapid manufacturing
- Reverse engineering
- Archeology, documentation of art-historical objects, etc.



Innovative technology

With the high light intensity and fast camera on the ZEISS COMET L3D 2 sensor, you have the flexibility you need when using it at different sites.

The system delivers precise 3D data and automatically recognizes changes in vibration and exposure, even in difficult ambient conditions - high-end technology for exceptional data quality with maximum ease of use.

Moreover, the enormous light yield and the sensationally high measuring speed ensure reliable data capture on different object surfaces.



ZEISS COMET L3D 2 5M - technical data

Resolution	2448 x 2050
Measuring volume in mm³	Measuring field 45: 45 x 38 x 30 Measuring field 75: 74 x 62 x 45 Measuring field 100: 118 x 98 x 60 Measuring field 250: 255 x 211 x 140 Measuring field 500: 481 x 404 x 250
3D point spacing in µm	Measuring field: 45 / 75 / 100 / 250 / 500 18 / 30 / 48 / 105 / 196
Fastest measuring time in seconds	~ 1
Working distance in mm	760 for measuring fields 45 / 75 / 100 / 250 / 500
Computers	Available with desktop computer or notebook
Sensor positioning	Tripod or column-type stand with a manual rotational/swivel axis
Automatic object positioning	Rotary table (COMETrotary, COMETdual rotary)
Available software	colin3D

Carl Zeiss
Optotechnik GmbH
Georg-Wiesböck-Ring 12
83115 Neubeuern
Germany

Phone: +49 8035 8704-0
Fax: +49 8035 1010
Email: optotechnik.metrology.de@zeiss.com
Website: <http://optotechnik.zeiss.com>